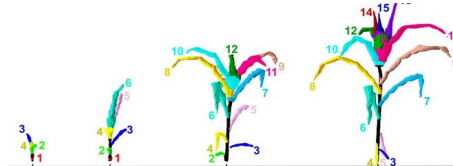
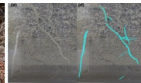
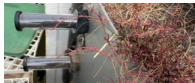
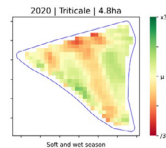
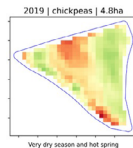


# Plant Phenomics & Enviromics across scales



Images courtesy of V Cadot (GEVES), Cyril Evrard (UCLouvain), Tom Kenda, Xavier Draye, Pierre Defourny (UCLouvain), Waler Gerra (CSL Laimburg), Nadia Soudzilovskaia (Univ Hasselt), Daviet et al. *Plant Methods* 18, 150 (2022). 10.1186/s13007-022-00961-4 (CC BY 4.0).

## Special Issue

Submission deadline  
31 March 2026

.....  
*Top left* Infected and healthy wheat heads as detected by AI models from NIR and RGB images. *Top right* Low-cost connected sticks. *Centre left, top* Heterogeneity map based on satellite imaging. *Centre left, bottom* Root in rhizotrons at Ecotron Hasselt. *Centre right* LiDar imaging of apple tree orchards. *Bottom* AI based tracking of individual maize leaves over time.  
.....



*Edited by*  
Bertrand Muller  
Roland Pieruschka  
Xavier Draye  
Jörg-Peter Schnitzler

# Plant Phenomics & Enviromics across scales

## Preliminary List of Invited Authors

*Ioannis Athanassiadis*

*Onno Müller*

*Scott Chapman*

*Carla Pinheiro*

*Boris Parent*

*David Rousseau*

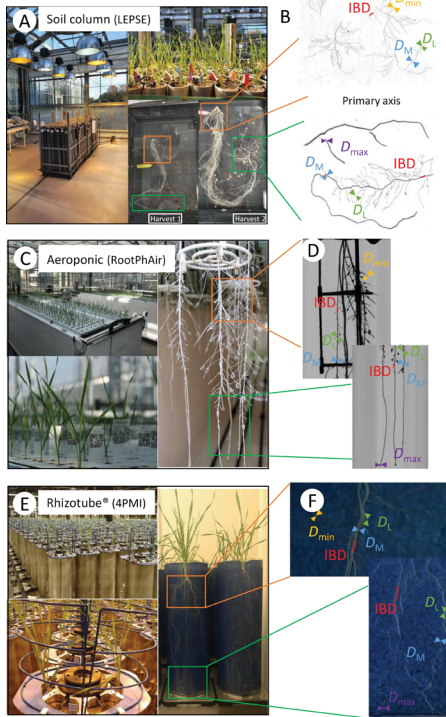
*Stijn Dhont*

*Susie Robinson*

*François Tardieu*

*Shouyang Liu*

*Right* Images of plants, root systems, and measured root parameters in the three experimental set-ups. Image courtesy of Nguyen *et al.* 2024, *Journal of Experimental Botany*. 10.1093/jxb/erae009



Journal of  
Experimental  
Botany



Owned by  
**S E B**  
SOCIETY FOR EXPERIMENTAL BIOLOGY

Published by  
**OXFORD**  
UNIVERSITY PRESS

## Invitation to submit

We welcome contributions to this special issue. If you would like to submit a paper, either research or review, please [email](#) a title and brief outline for the consideration of the guest editors. All papers are subject to the usual standards of peer review and must fit the scope of the journal. The deadline for submissions is 31 March, 2026.

Contact JXB Editorial Office, c/6 North Campus Academic Porters, County College, Lancaster University, LA1 4YE, United Kingdom • +44 (0)1524 592715 • j.exp.bot@lancaster.ac.uk • @JXBot • academic.oup.com/jxb